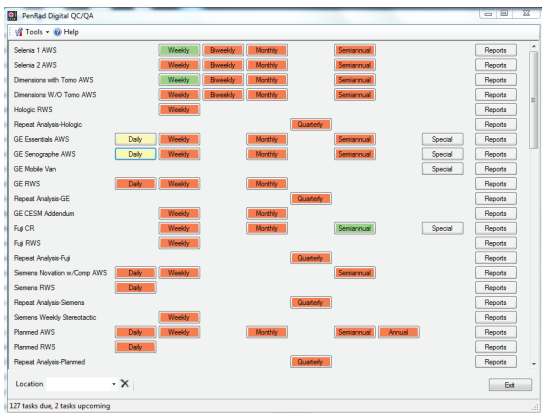


Digital QA/QC Breast Imaging Module



The DQC Quick-View worklist provides Auto-Remind and One-Glance technology to display the current status of all of devices and CE/CME reminders.

DQC tracks all FFDM, MRI, stereo modalities, reading workstations and film printers, based on guidelines established by the manufacturer and/or MQSA.

Ease of use allows users to collect, retrieve and produce MQSA audit information effortlessly and instantly to increase staff utilization.

Used as an electronic enterprise wide solution, DQC provides centralized records thus eliminating binders and clipboards at multiple locations. The application can be accessed throughout the network, as a web hosted solution or installed on a laptop.

DQC reduces duplication of data entry and collection from various systems. Data is captured into a simple form to track, calculate and record.

Produces MQSA reports for audit and inspections. Manages Continuing Education (CE/CME) credit tracking with reminders schedules to be pro-active.

PenRad

114 Commerce Circle, Buffalo, MN 55313

PenRad.com | sales@penrad.com | 763.475.3388

Multiple advanced features are integrated into each device recording template, such as Variance-Alert to instantly notify when parameters are exceeded.

As QC recording is completed, the status shows green indicating the task is current, yellow states due shortly and red is due or past-due. For convenience, devices can be displayed and filtered on the worklist by location, device type and/or theme.

Automatic calculations, pre-population of inherited baseline values and other key information are integrated, eliminating redundant data entry.

The DQC system adds significant meaningful use to your breast imaging facility by standardizing and automating QC, offering centralized electronic access and minimizing preparation for the MQSA audit.

With DQC, facilities can collect, retrieve and produce comprehensive MQSA audit reports instantaneously with minimal effort.

Device logs and audit reports are viewed and printed in rich graphical formats. As modality technology and regulations evolve, updated templates are offered.

Files can be attached to a device. For example; scans of service record, CE certificate, an image, a PDF, a Word document, and/or wave file (audio).

Customize labeling of each device is offered to match your facility's needs, and the worklist can be organized based on your workflow requirements.

DQC offers compliance with a set of device templates based on manufacturer and/or MQSA guidelines.

The auto-remind feature allows instant visualization of the QC status of all your devices on one screen.

Check out our PenTask module for other tasks requiring scheduling and compliance.

PenRad

114 Commerce Circle, Buffalo, MN 55313

PenRad.com | sales@penrad.com | 763.475.3388