

# PenGenetics

## PenRad's Medical Risk Assessment Survey Simultaneously Computes Genetic Testing Eligibility

PenRad incorporates the Tyrer Cuzick and BCRA engines to compute patient's 5 yr, 10 yr and lifetime breast cancer risk values.

Patient's cancer risk values incorporate personal information plus breast density, along with cancer history age of 1st, 2nd and 3rd-degree relatives with breast, colon, endometrial, ovarian, pancreatic, or prostate cancer.

Patient historical information is displayed and updated through our compact medical and risk screen as well with our patient tablet application if necessary.

High risk cancer values are used for adjunct screening eligibility for ultrasound and MRI.

Patient's values and relatives' cancer history are incorporated to compute genetic testing eligibility via many genetic models.

High-risk cancer risk values and genetic eligibility are automatically calculated real-time without using secondary systems, adding efficiency.

This information can automatically appear in radiologist report and patient letters as well.

**Ready for a demo?**

**PenRad.com | sales@penrad.com | 763.475.3388**

BCRA 5yr: 4.5% life: 21.4%

TC short: 7.4% life: 16.9%

Family Hx gynecological cancer

Consider genetic consultation

Meets Medicare genetic testing criteria

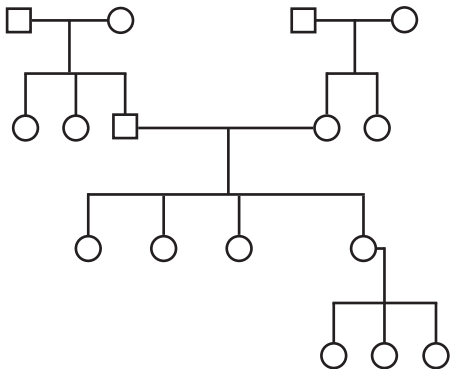
Multiple 1st degree relatives w/BC

### Opportunities

Increased risk fulfillment may identify and enhance services such as breast ultrasound and MRI, and genetic testing opportunities for patient and relatives. Data captured can be provided to justify the need.

### Advanced analytics

PenRad's advanced analytics empowers the clinic to profile patient population for risk assessments offering endless opportunities.



# PenRad

114 Commerce Circle, Buffalo, MN 55313

PenRad.com | sales@penrad.com | 763.475.3388